

# **Digitales Brandenburg**

hosted by **Universitätsbibliothek Potsdam**

## **Fotoalbum des Leutnant d. R. MA Gerhard Titzck 1914 - 1917, Flandern**

**Titzck, Gerhard**

**1914/17**

Illustrationen

[urn:nbn:de:kobv:517-vlib-7637](https://nbn-resolving.org/urn:nbn:de:kobv:517-vlib-7637)



a.



c.



b.



d.



e.







4



a



b



c



d



e



f



g



h



i



j

4



a



b



c



d



e



f



g



h



i



j











a



b



c



d





11



12



13



14



15





a



b



c



d



e



f



g













11



12



13



14



15





a



b



c



d



e









11



12



13



14





a



b



c



d













a



b



c



d







a



b



c



d



e



f



g



h



i



j



k



X



a



b



c



d



e

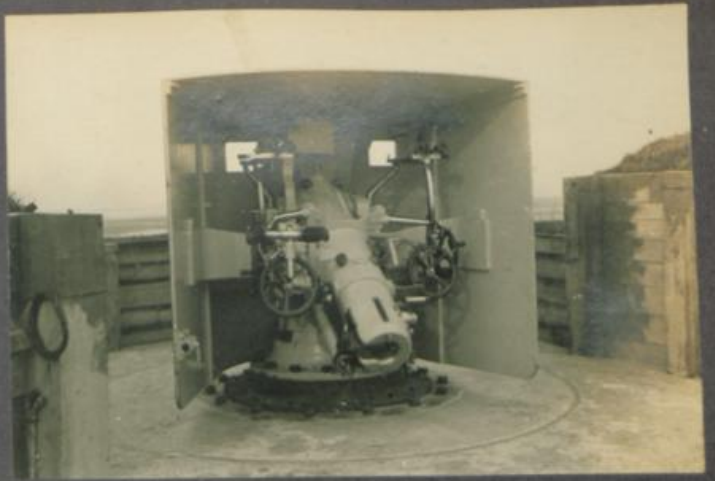


f



g







a



b



c



d



e



f



g



h



i















cc



cc



cc



cc



cc



cc



cc



cc



cc



















a



b



c



d



e



f



g



h



X X













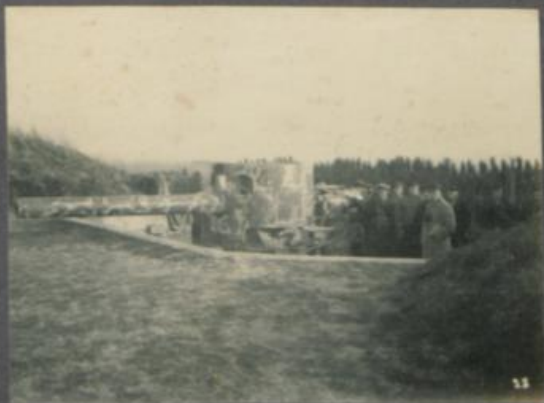




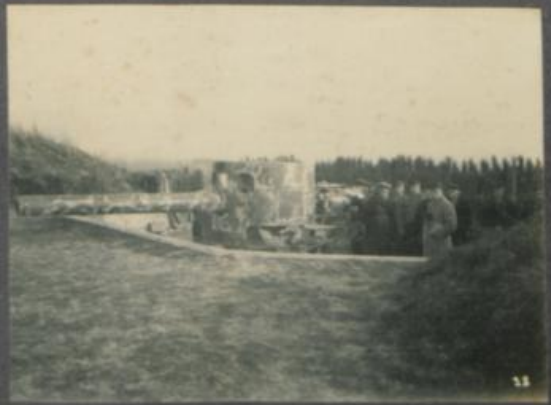














a



b



1



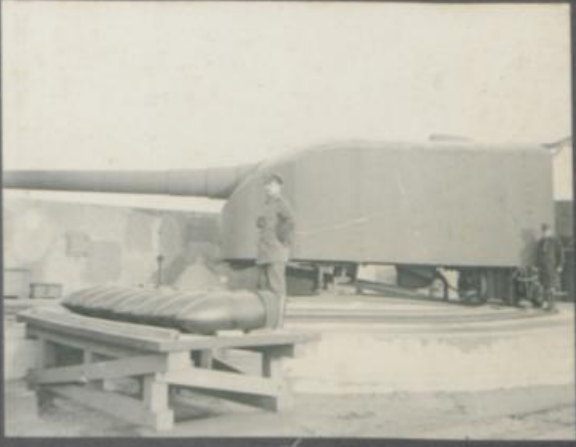
a



b



c



d



e



f

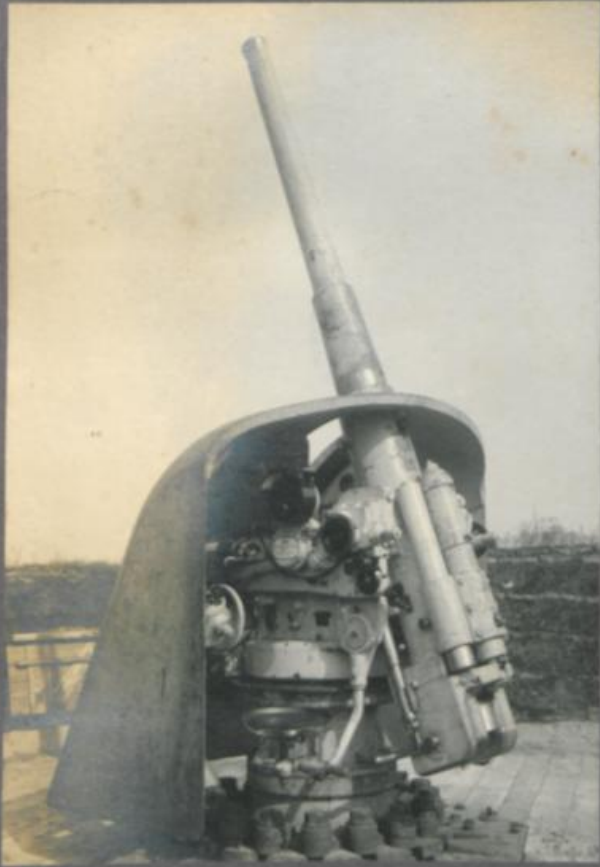


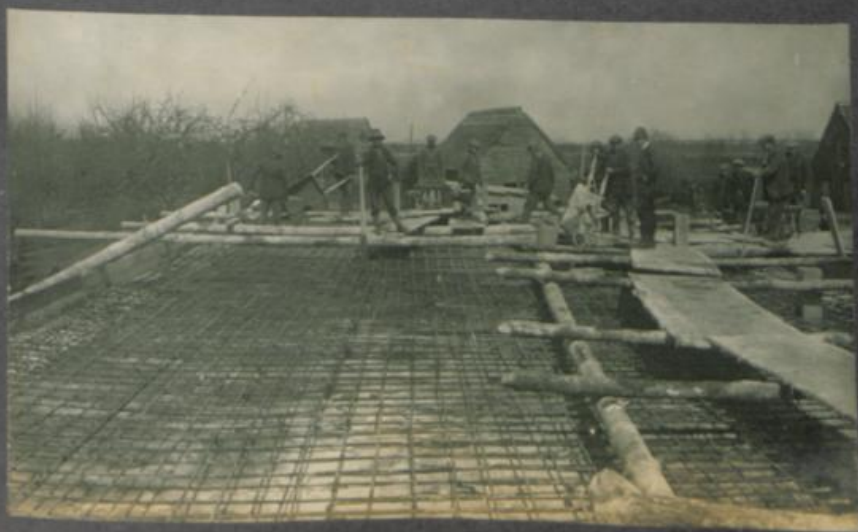
g



h













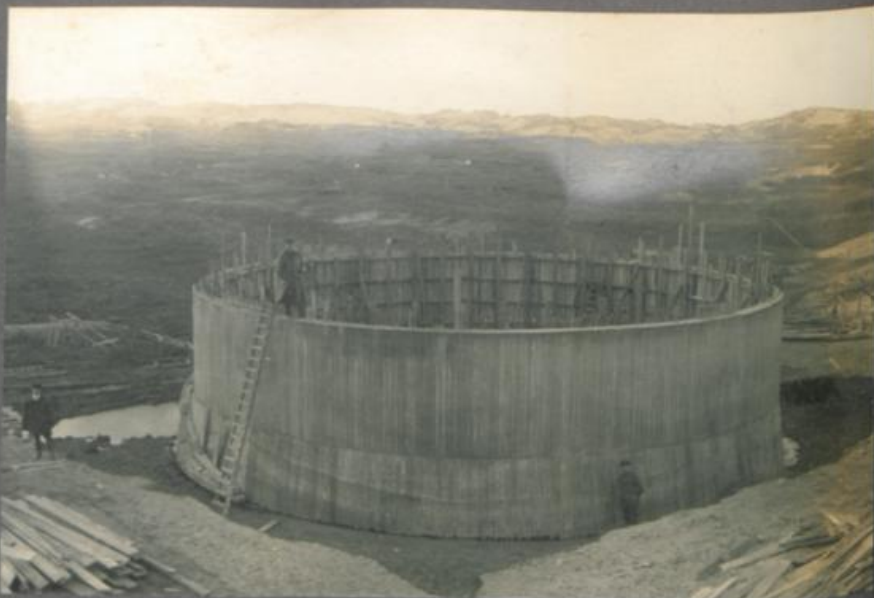








a



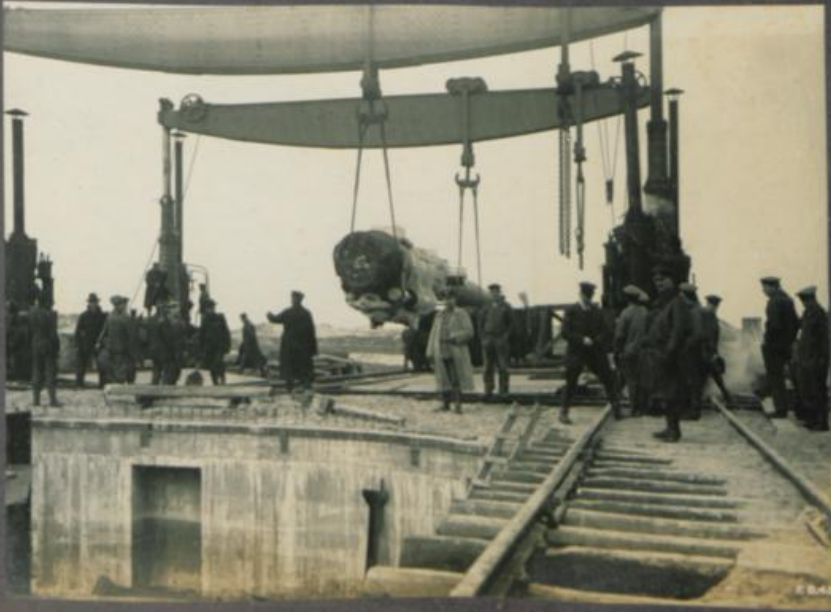
c



b



d





“



6





c



c



b



d







cc



c



c

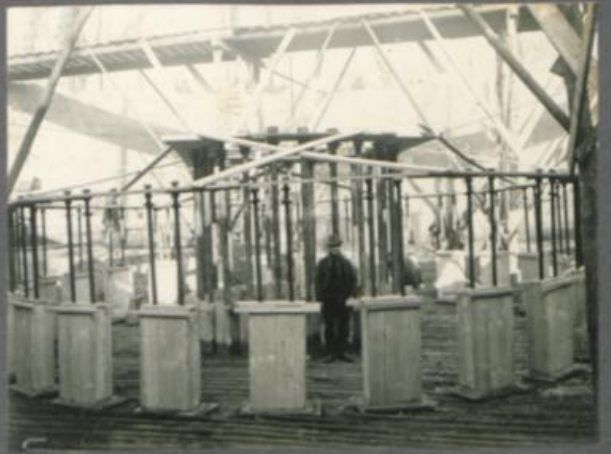


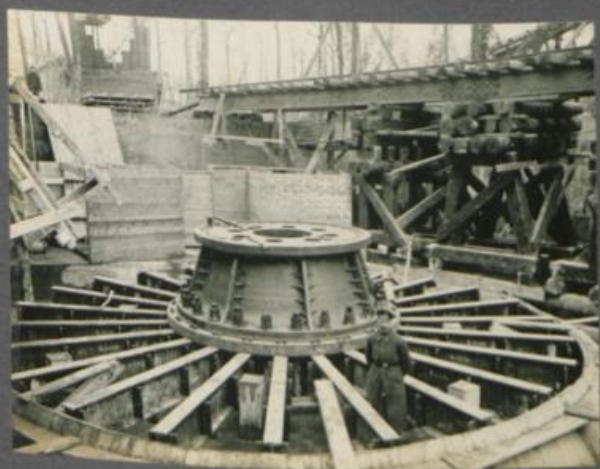
cc



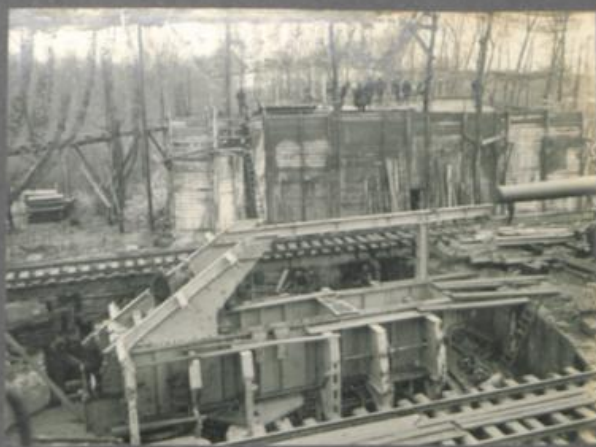
c











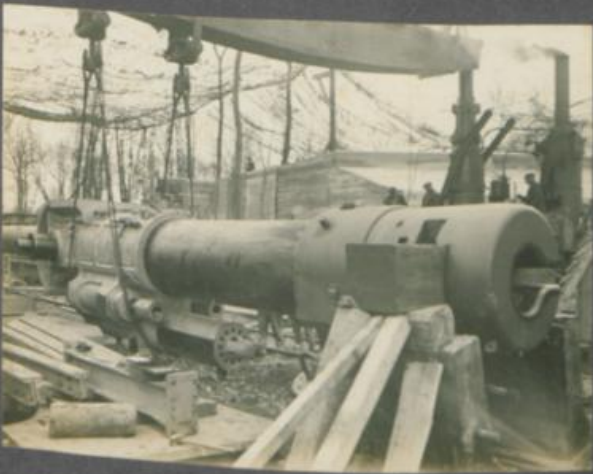




a



b



c

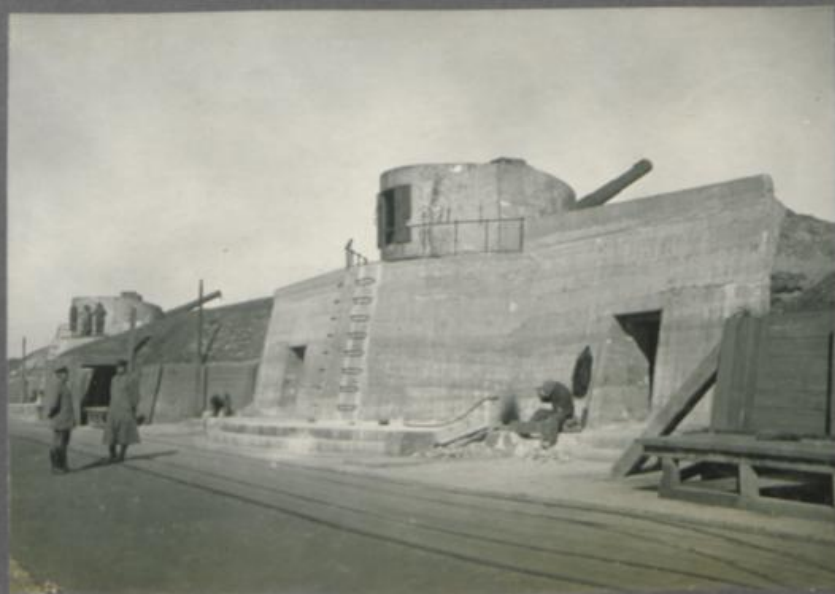


d



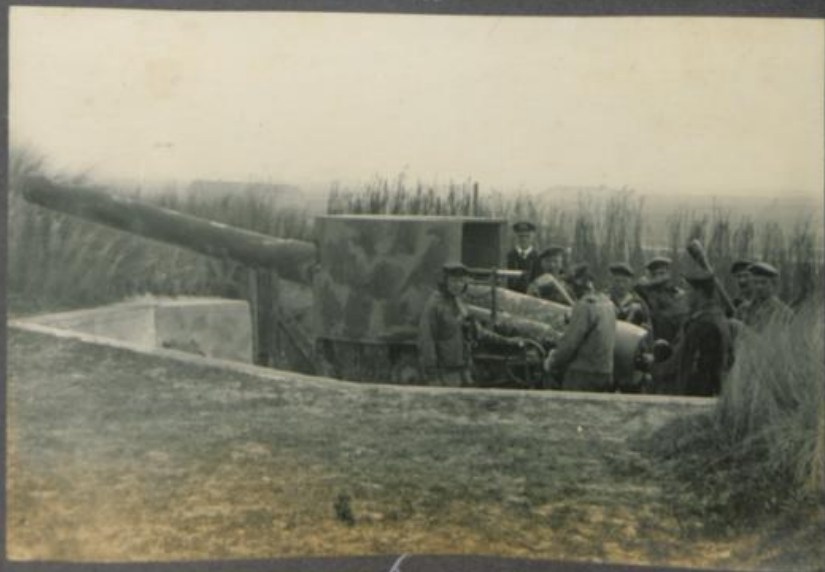








cc



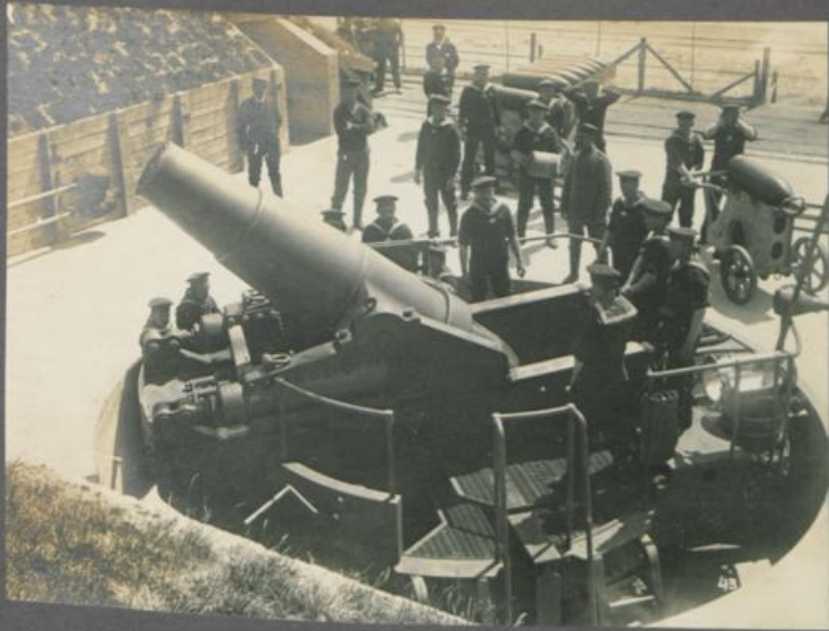


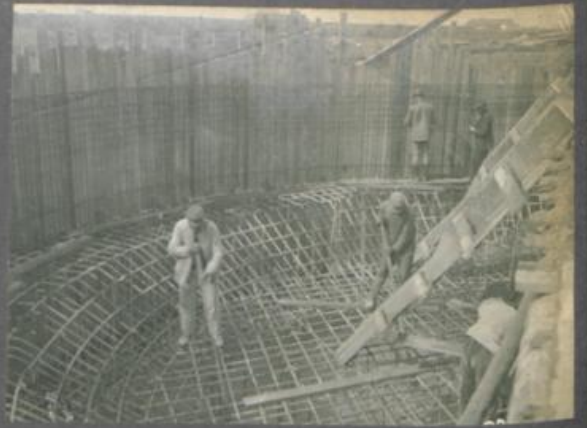
a



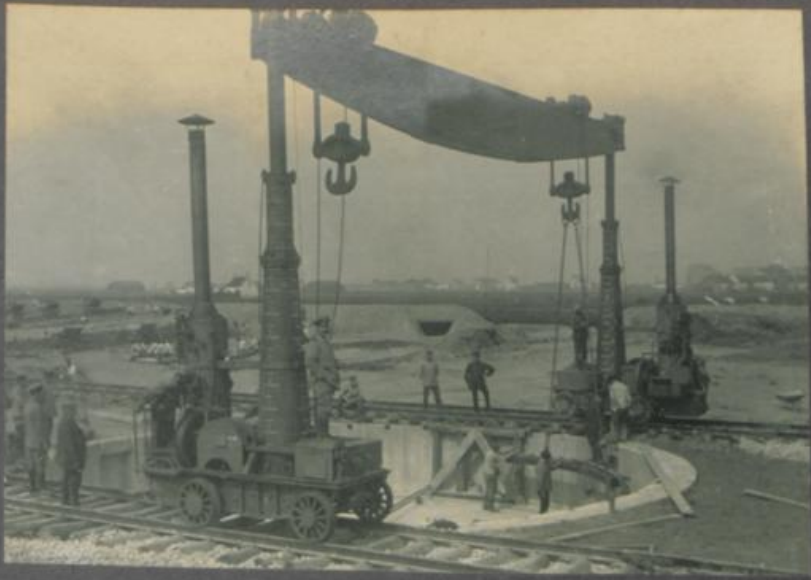
b



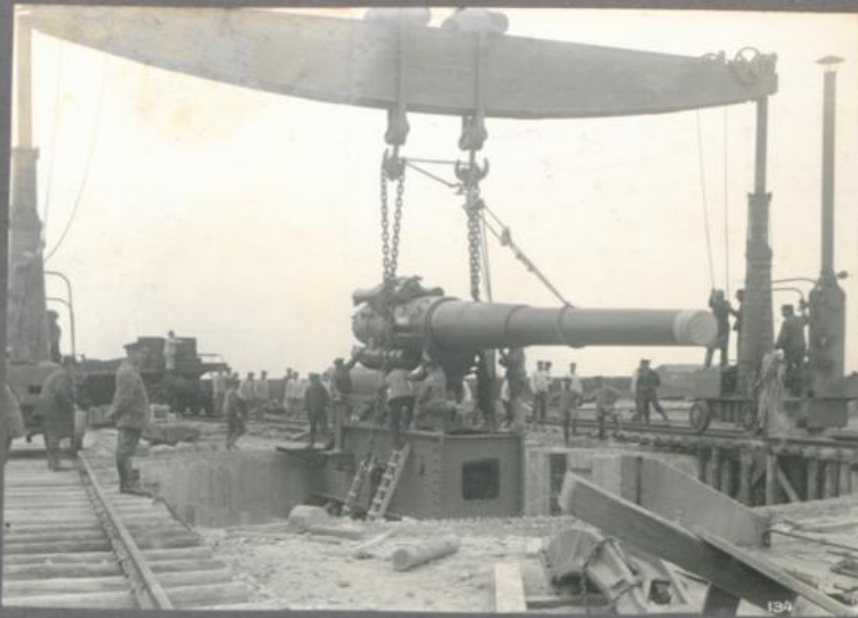


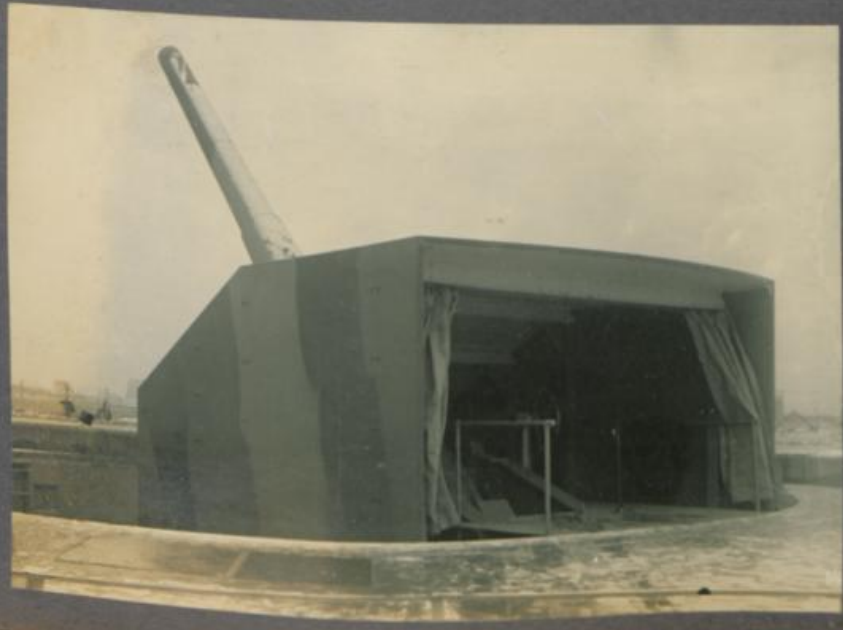










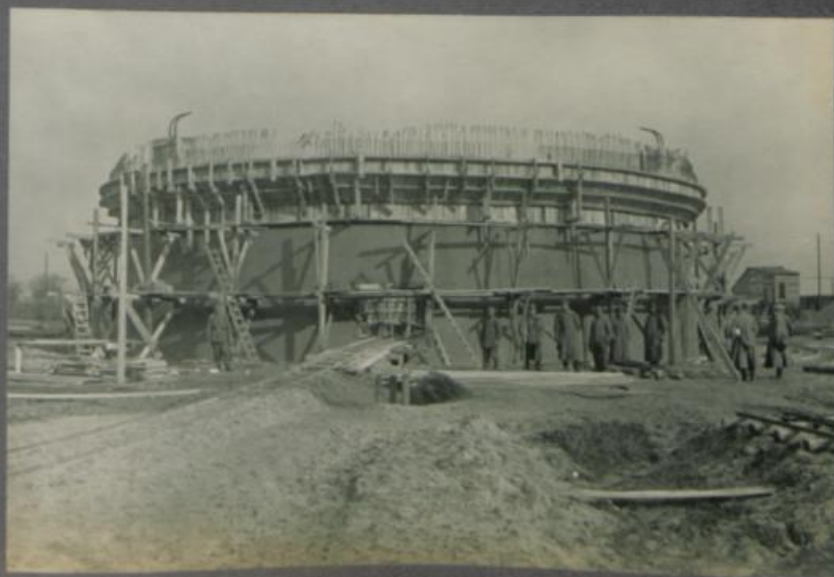




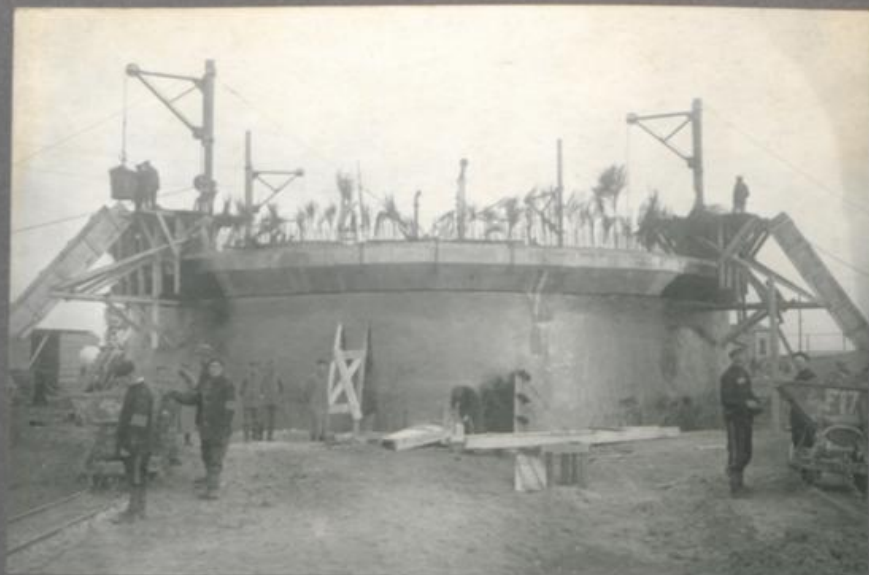


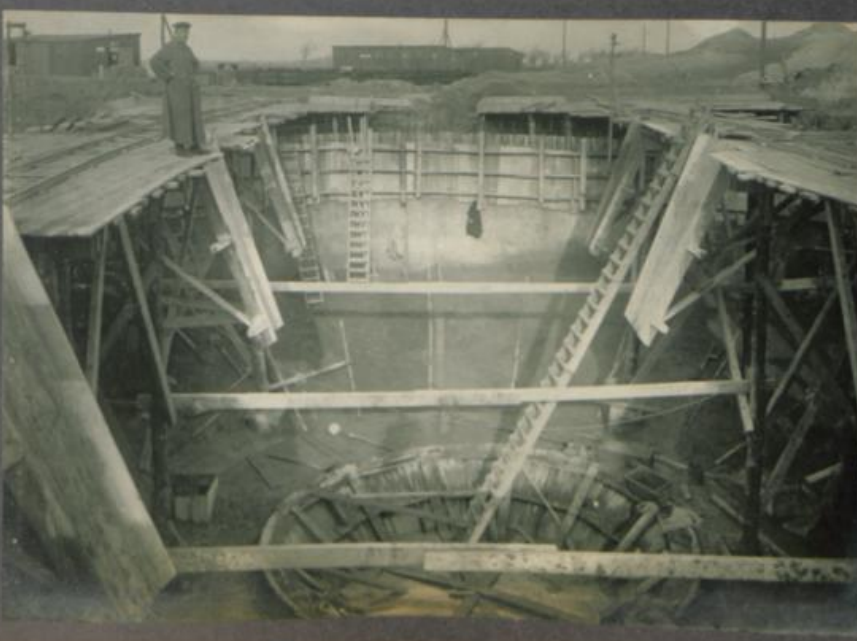


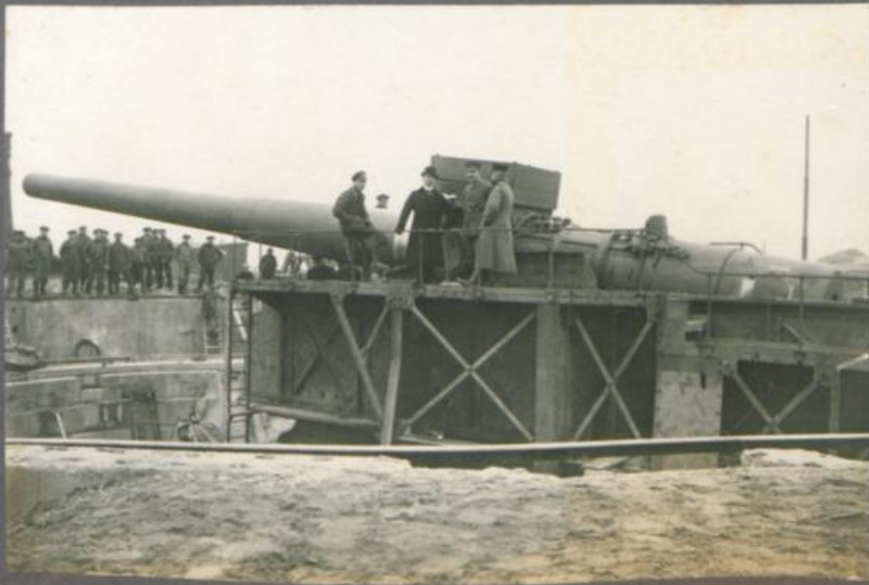
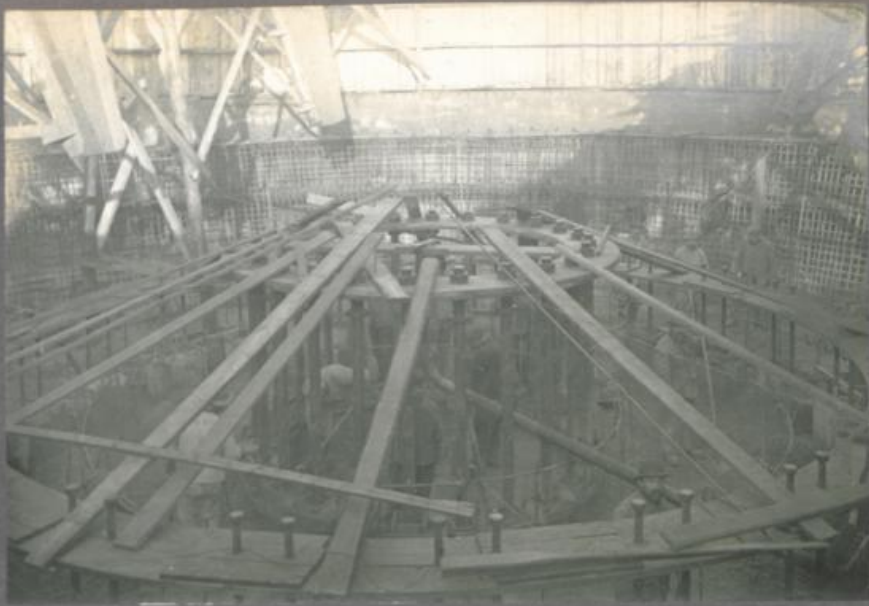
















a



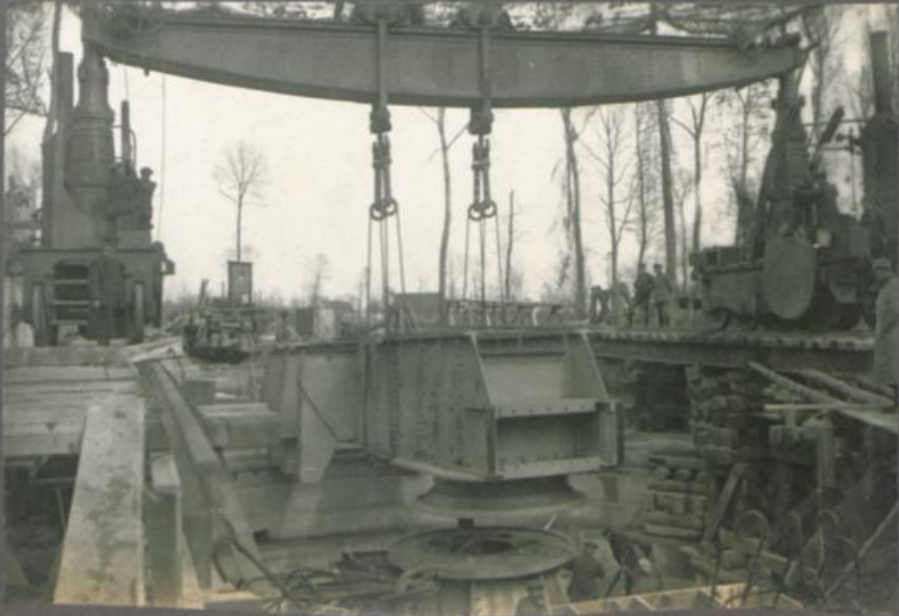
c



b



d











a



c



a



c



b



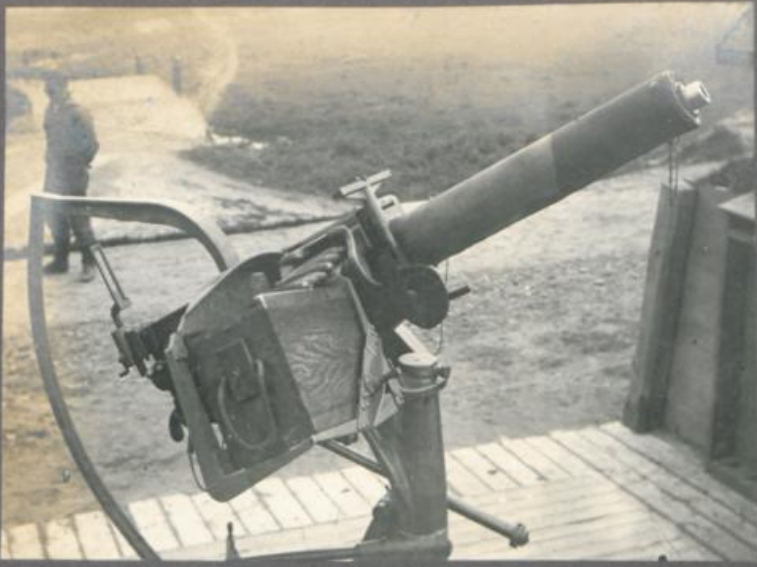
d









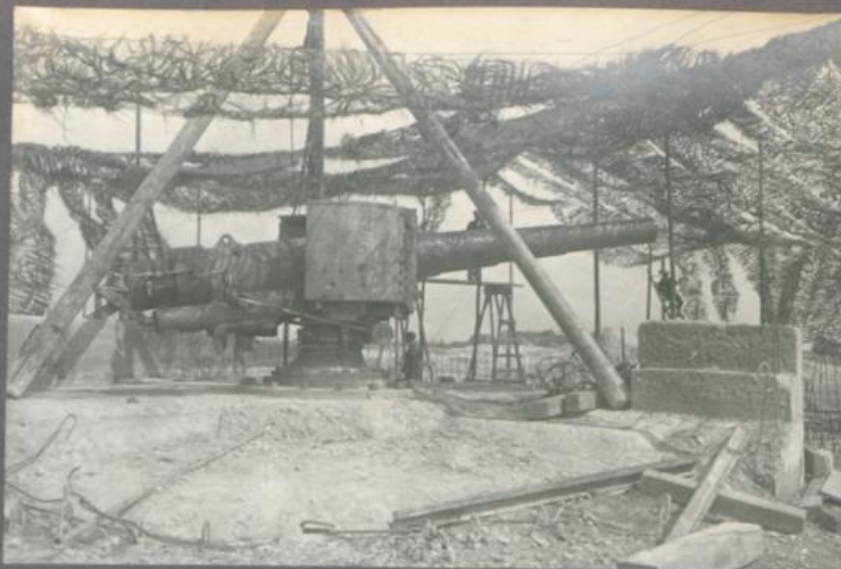












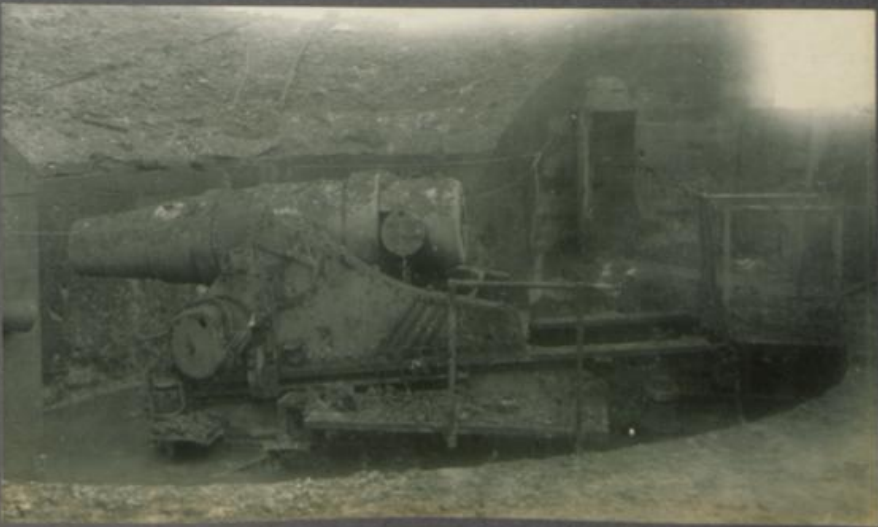




a













a



b



d



c



e







a



c



b



d



a



b



c



d



e



f



g



h









a

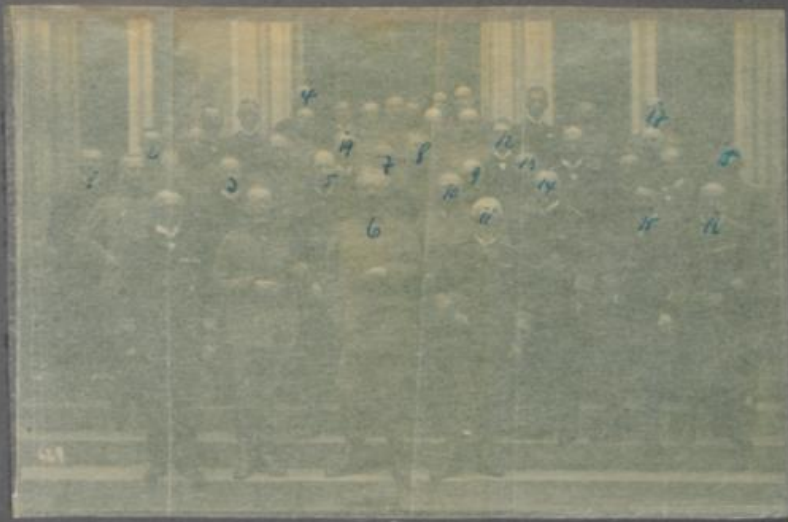


b



c

c

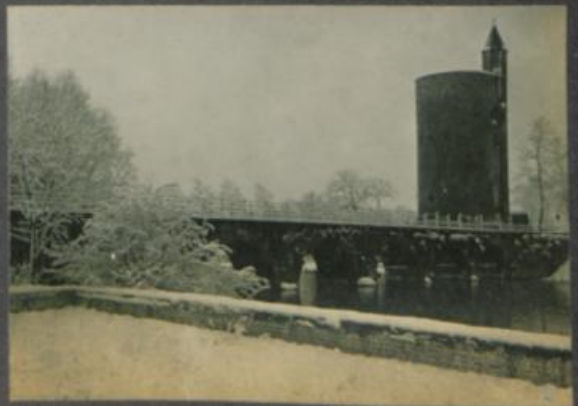






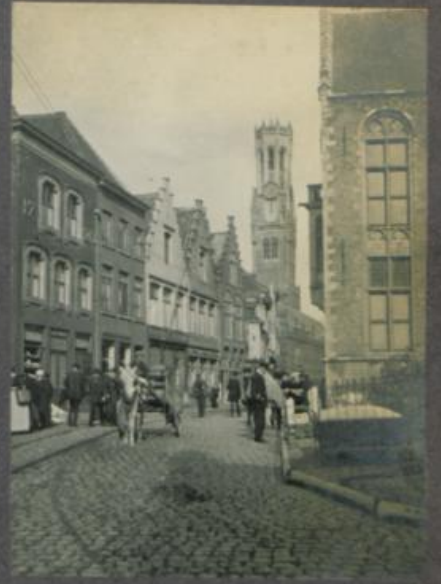
















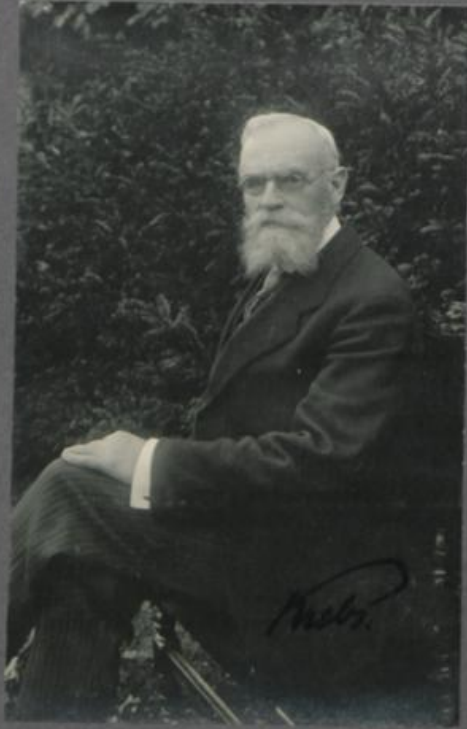


























a



b



d



c