

Digitales Brandenburg

hosted by **Universitätsbibliothek Potsdam**

**Das Norddeutsche Unter-Oligocän und seine
Mollusken-Fauna**

Strombidae - Muricidae - Buccinidae

Koenen, Adolf von

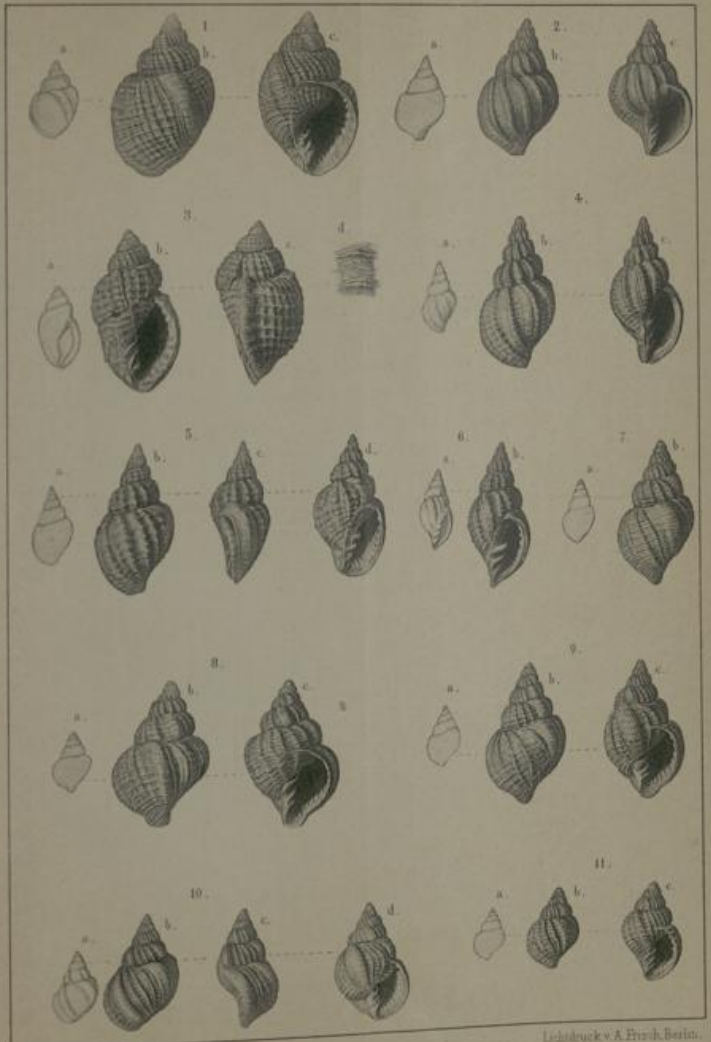
Berlin, 1889

Tafel XI.

urn:nbn:de:kobv:517-vlib-7173

Tafel XI.

- Fig. 1 a, b, c. *Cancellaria lima* v. KOENEN von Lattorf S. 126
1 a in natürlicher Grösse. 1 b, c vergrössert.
- Fig. 2 a, b, c. *Cancellaria tenuistriata* v. KOENEN von Helmstädt S. 129
2 a in natürlicher Grösse. 2 b, c vergrössert.
- Fig. 3 a, b, c, d. *Cancellaria interstitialis* v. KOENEN (etwas ver-
drückt) von Lattorf S. 130
3 a in natürlicher Grösse. 3 b, c, d vergrössert.
- Fig. 4 a, b, c. *Cancellaria excellens* BEYRICH juv. von Lattorf . . S. 143
4 a in natürlicher Grösse. 4 b, c vergrössert.
- Fig. 5 a, b, c, d; 6 a, b. *Cancellaria labratula* v. KOENEN von Lattorf S. 147
5 a; 6 a in natürlicher Grösse. 5 b, c, d; 6 b vergrössert.
- Fig. 7 a, b; 8 a, b, c; 9 a, b, c; 10 a, b, c, d; 11 a, b, c. *Cancellaria*
rugosa v. KOENEN S. 120
7; 8; 9; 11 von Lattorf. 10 (var.) von Calbe a. S.
7 a; 8 a; 9 a; 10 a; 11 a in natürlicher Grösse.
7 b; 8 b, c; 9 b, c; 10 b, c, d; 11 b, c vergrössert.
-



O. Peters. sculps.

Lithdruck v. A. Hirsch, Berlin.

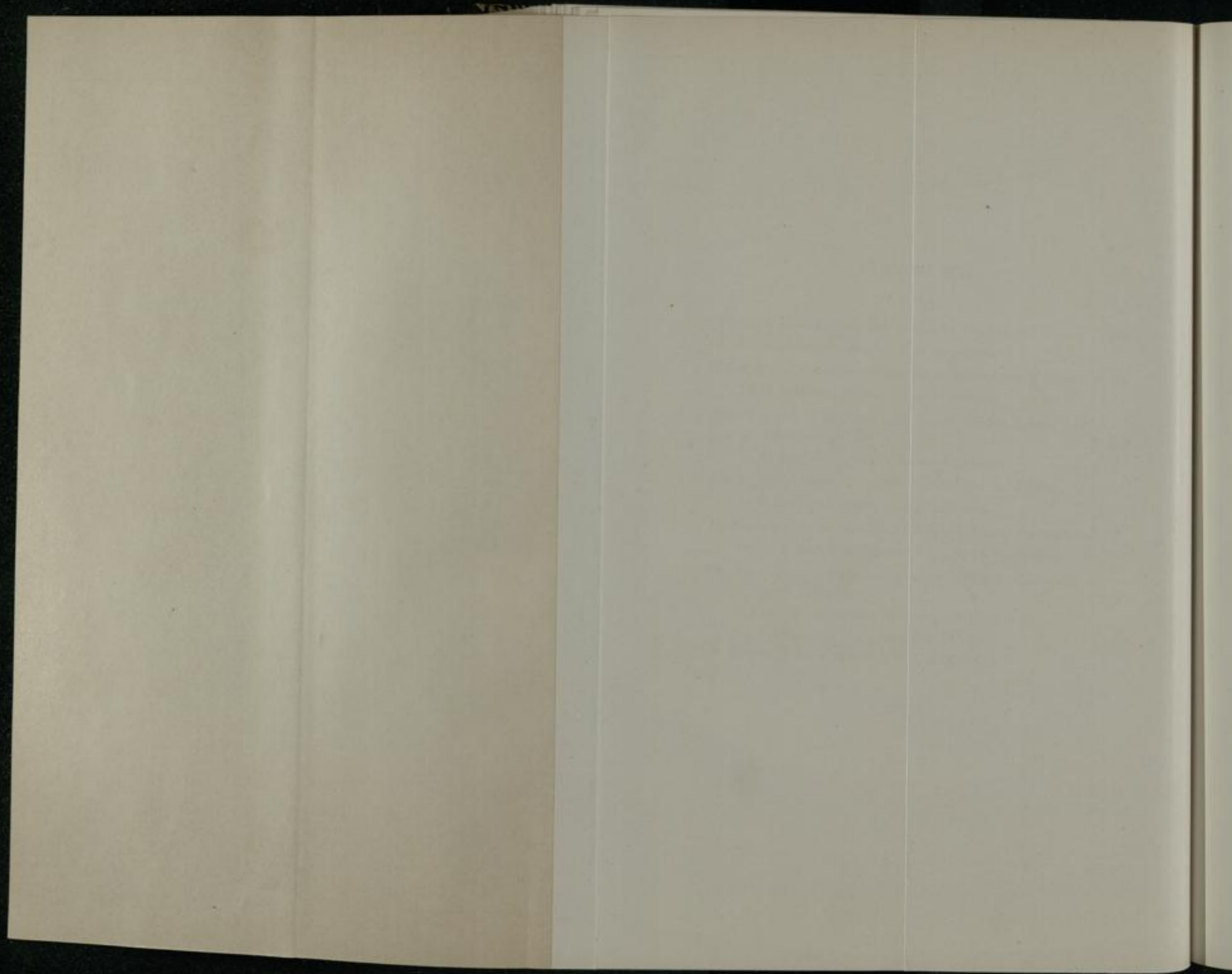


PLATE XXI

The first of the two figures is a drawing of the
interior of the chamber, showing the
position of the body and the
direction of the air flow. The
second figure is a drawing of the
chamber, showing the position of the
body and the direction of the air flow.