

Digitales Brandenburg

hosted by **Universitätsbibliothek Potsdam**

Die Burgwälle des Ruppiner Kreises

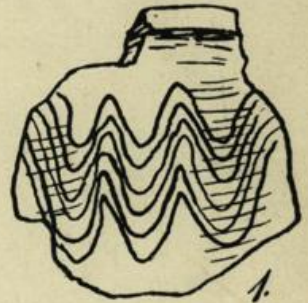
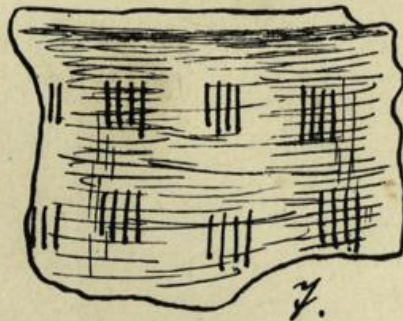
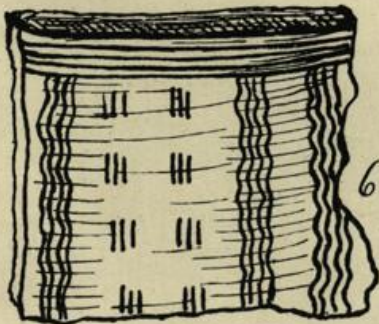
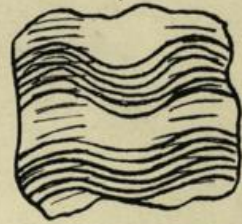
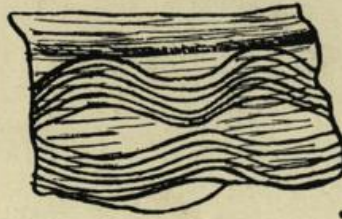
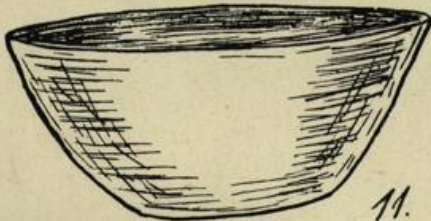
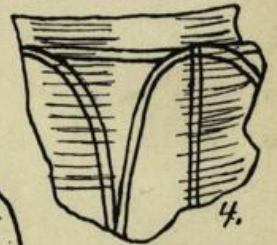
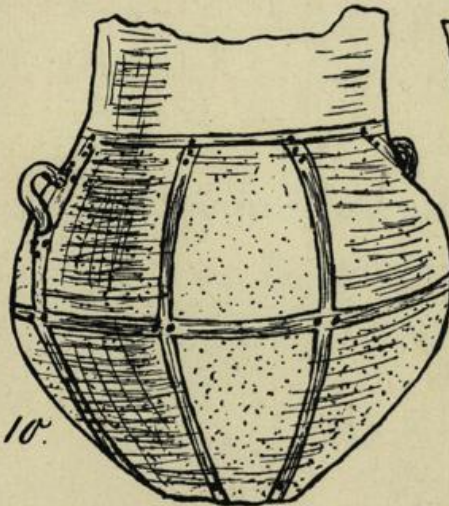
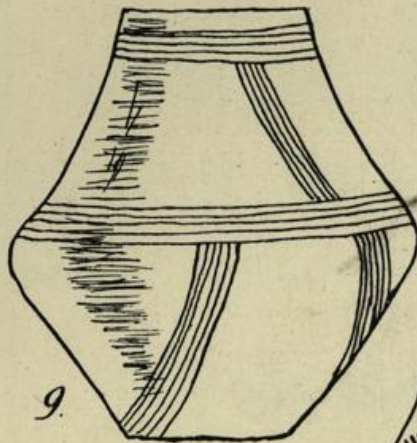
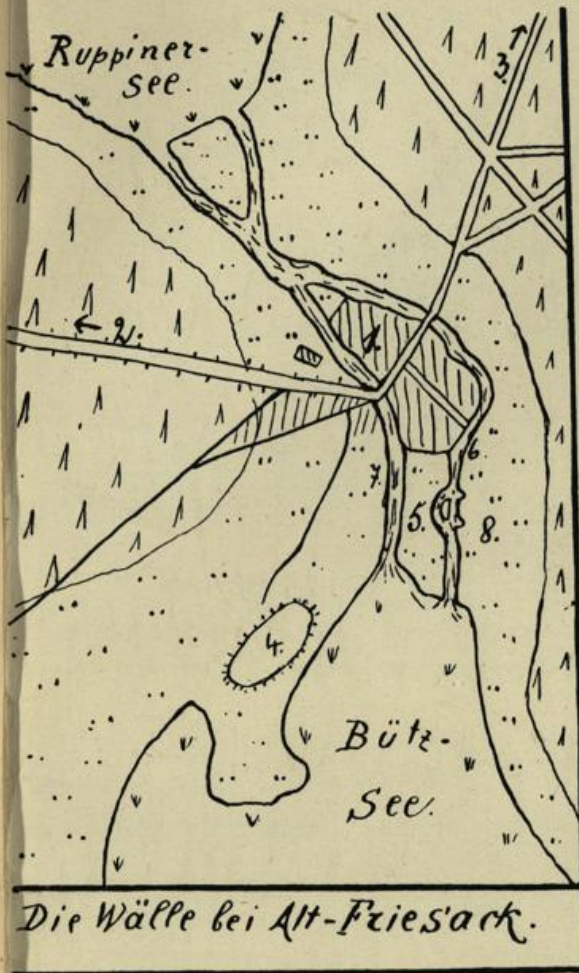
Bartelt, Wilhelm

Waase, Karl

Würzburg, 1910

Tafel IX.

urn:nbn:de:kobv:517-vlib-456



Tafel IX. Oben links: Alt-Friesacker Wallskizze. 1. Alt-Friesack. 2. Weg nach Wustrau.
 3. nach Radensleben. 4. Langer Burgwall. 5. Hoher Burgwall. 6. Alter Rhin.
 7. Ruppiner Kanal. 8. Urnenfundstätten.
 1-8. Scherben von Fundstelle 4 und 5. 9-11. Urnen und Schale von Fundort 8.
 12. Schale von Wustrau.