

# **Digitales Brandenburg**

hosted by **Universitätsbibliothek Potsdam**

## **Die Fauna der ältesten Devon-Ablagerungen des Harzes**

Atlas von 36 lithographischen Tafeln

**Kayser, Emanuel**

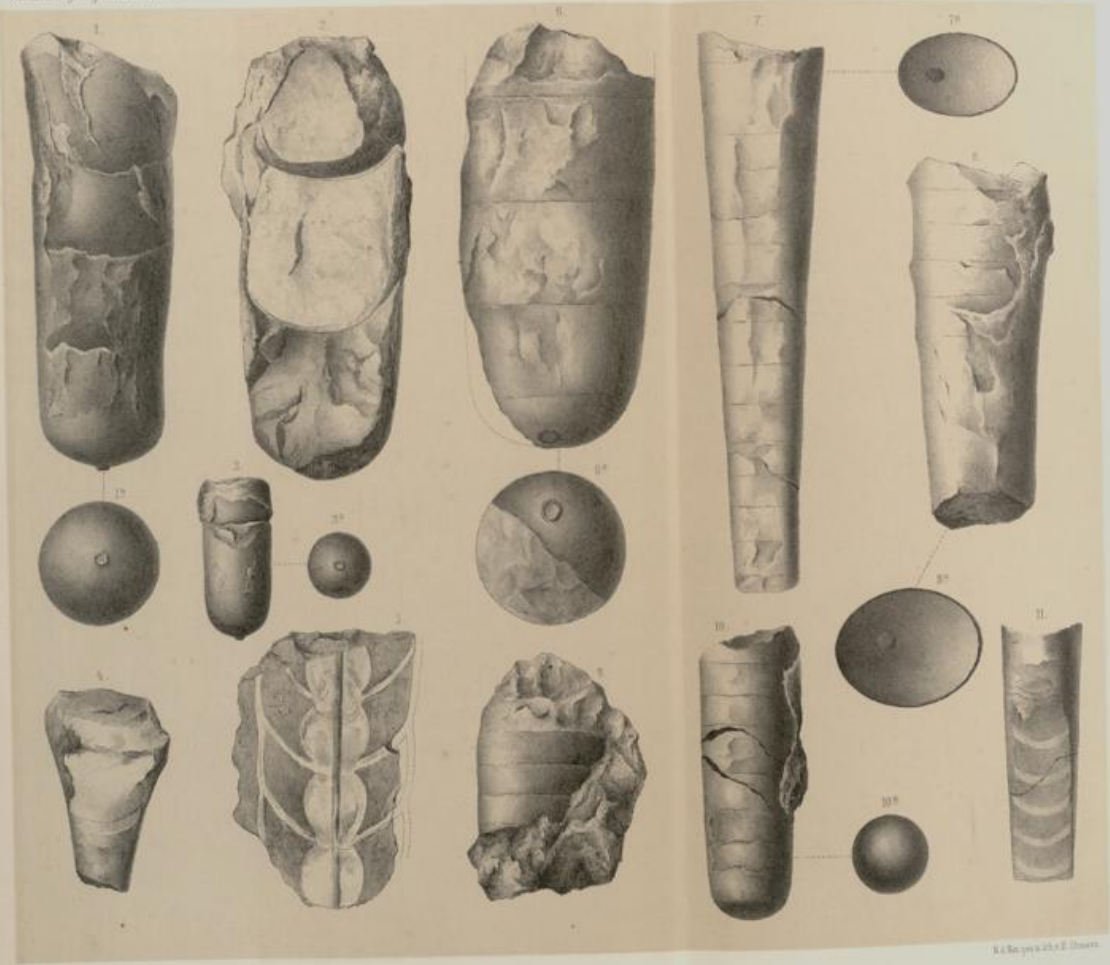
**Berlin, 1878**

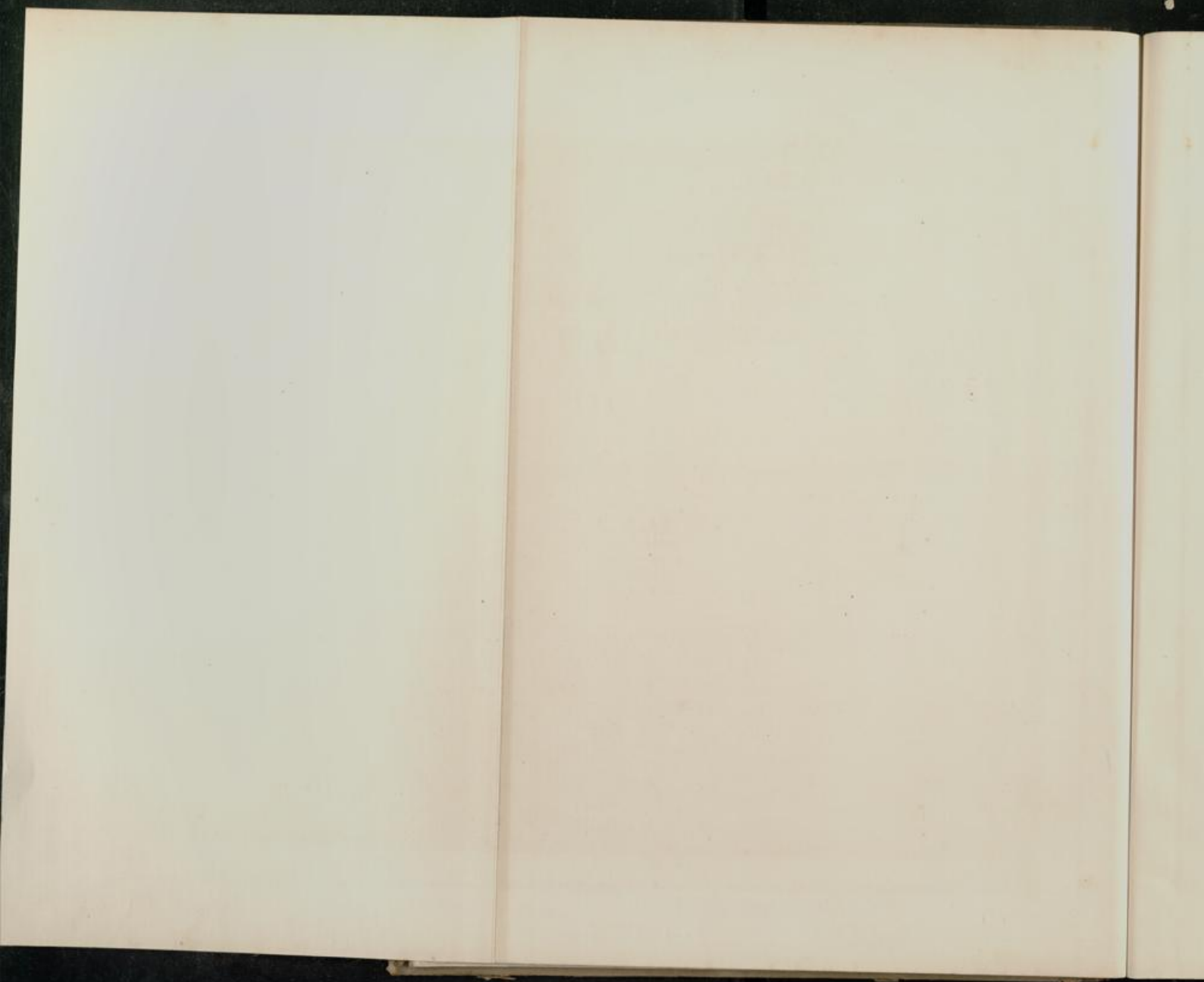
Tafel X.

**urn:nbn:de:kobv:517-vlib-11466**

Tafel X.

- Fig. 1.—3. *Orthoceras commutatum* Giebel . . . . . p. 69.  
Steinkerne verschiedener Individuen. Laddekenberg. — Samml. d. geol. Landesanst.  
— Vergl. auch Tafel 11, Fig. 4., 8.
- Fig. 4. *Orthoceras* sp. . . . . p. 79.  
Steinkern. Hasselfelder Kalkbruch. — Samml. d. geol. Landesanst.
- Fig. 5. *Orthoceras Beyrichi* Kays. . . . . p. 80.  
Durch den Siphon gelegter Längsschliff. Joachimskopf. — Sammlung d. geol.  
Landesanst.
- Fig. 6. *Orthoceras* cf. *migrans* Barr. . . . . p. 71.  
Steinkern. Hasselfelder Kalkbruch. — Samml. d. geol. Landesanst.
- Fig. 7., 8., 11. *Orthoceras hercynicum* Kays. . . . . p. 72.  
Steinkerne dreier Individuen; 11. angeschliffen. Hasselfelder Kalkbruch. — Samml.  
d. geol. Landesanst. — Vergl. auch Tafel 11, Fig. 3.
- Fig. 9., 10. *Orthoceras* sp. . . . . p. 72.  
Steinkerne zweier Individuen. Laddekenberg. — Samml. d. geol. Landesanst.





Year	...	...	...
1910	...	...	...
1911	...	...	...
1912	...	...	...
1913	...	...	...
1914	...	...	...
1915	...	...	...
1916	...	...	...
1917	...	...	...
1918	...	...	...
1919	...	...	...
1920	...	...	...